

Birchgrove Mill Hill Ayrton House



Typical Two Bedroom

Flat Types: B104/B106/B108

Kitchen/Living/Dining:

21'4" x 14'11" / 6518 x 4554mm

Bedroom 1: 11'11" x 10'4"

/ 3644 x 3154mm

Bedroom 2: 8'12" x 10'11"

/ 2739 x 3324mm

Bathroom: 7'6" x 6'9"

/ 2050 x 2300mm

Please note: Measurements are rounded up maximums and may vary from apartment to apartment.

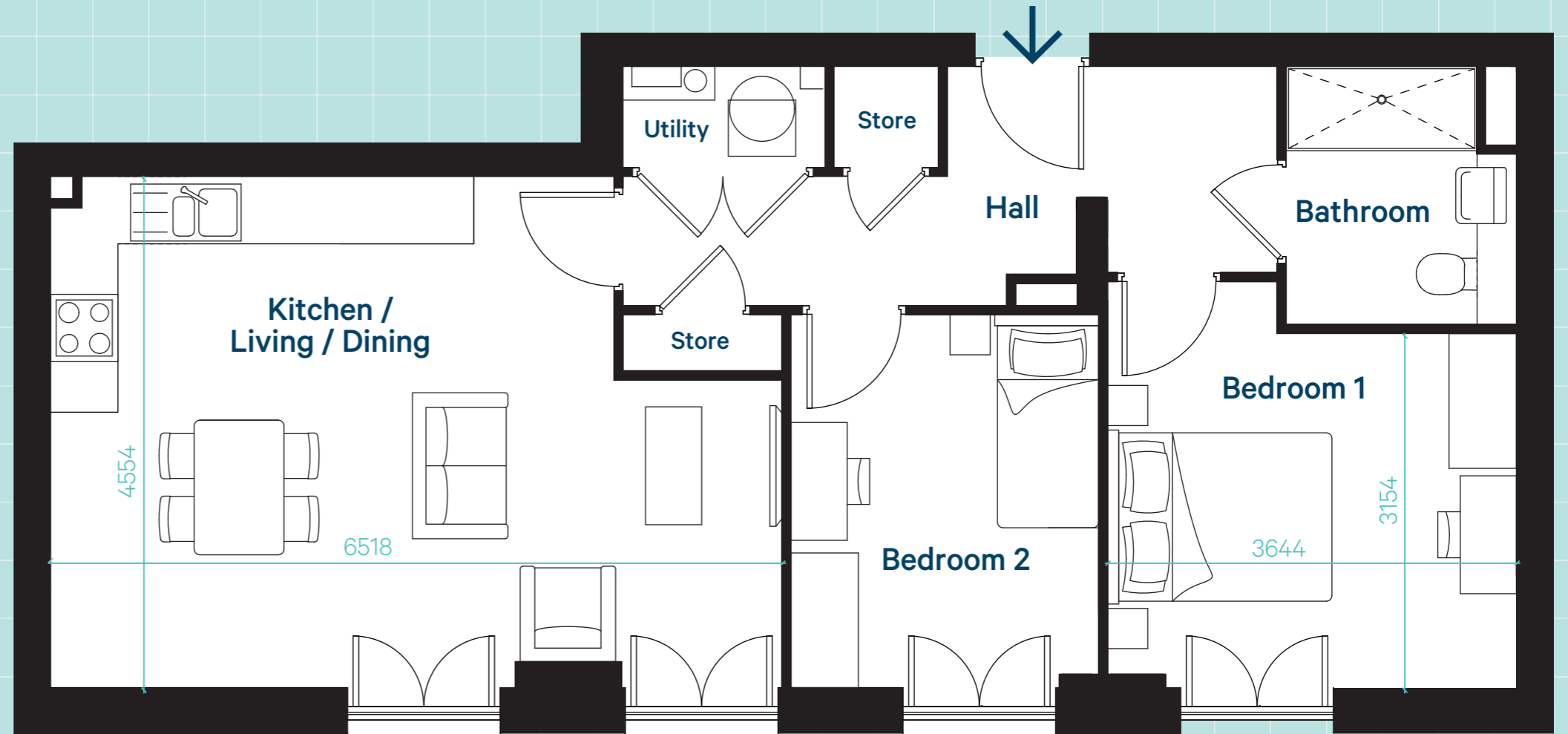
Layout as shown:

Plots 521*/4/8/12/16/20

Handed layout:

Plots 528*/23/27/31/35/39

*Additional window in Kitchen/Living/Dining area



Internal areas:

64.8-66.9sqm

697-720sqft

0 0.5m 2m Scale 1:50 @ A3 5m

Please note: These floor plans are intended to give a general indication of the proposed layout only. Layouts and dimensions are not intended to form part of any contract or warranty. Apartments are let unfurnished.